

SMT newsletter

VOLUME NINE
NUMBER TWO
AUGUST 1986

A PUBLICATION OF THE SOCIETY FOR MUSIC THEORY



Indiana University Musical Arts Center

Bloomington 1986 Conference

The ninth annual meeting of the Society for Music Theory will be held November 6-9, 1986 in the Indiana Memorial Union on the campus of Indiana University in Bloomington, Indiana. The program committee chaired by Vernon Kliever (Indiana University) has planned thirteen sessions including 36 papers ranging from 16th-century topics through the most recent music and emphasizing areas such as form, rhythm, and jazz. In addition, two special sessions have been scheduled including one on computer research and one on making a place for women in the profession. Joseph Kerman will be the keynote speaker and we look forward to a full and interesting four days. The preliminary convention schedule appears in this newsletter and lists committee and business meetings, papers and other events.

REGISTRATION To pre-register for the conference, please complete the enclosed red registration form and return in the envelope provided with your check made payable to *SMT Conference*. Mail to: SMT Conference, Mary Wennerstrom, Treasurer, Indiana University School of Music, Bloomington IN 47405. Registration fees are \$30 for regular members and \$15 for student and emeritus members. In order to guarantee opera tickets, the form

must be received by October 20, 1986. No refunds will be made after November 1, 1986. Registration at the conference will also be available at \$35 for regular and \$18 for student and emeritus members.

PROGRAMS On Friday evening November 7 Dean Charles H. Webb has graciously offered to host a cocktail reception for the Society in the University Club. Also that evening, the Indiana University School of Music will present a free concert featuring contemporary music performed by ensembles conducted by Jan Harrington and Harvey Sollberger. On Saturday, preceding the keynote address, Lewis Rowell, Chairman of the SMT Publications Awards Committee, will announce the first award recipients. Saturday evening the Indiana University Opera Theater opens its presentation of Mozart's *The Marriage of Figaro*. Tickets may be ordered on the registration form. Seats are available in the orchestra section or in the terraces of the Musical Arts Center, an outstanding opera and concert facility on the campus. The University Theater opens its production of Shakespeare's *Macbeth* on November 7 and 8. Tickets (\$5 each) will be available at the I.U. Auditorium Box Office after your arrival.

The campus of Indiana University, widely acclaimed for its woodland beauty and limestone buildings, offers a wide spectrum of activities

for the visitor. Of special interest are art exhibits in the University Art Museum (designed by I.M. Pei) and materials in the Lilly Rare Books Library. Both buildings are one block from the Indiana Memorial Union. The University Library and the School of Music Library are also within walking distance. Conference participants will have access to extensive sports facilities near the Union; check at the Front Desk for information.

TRAVEL Britt Airlines offers direct service to Bloomington from the Chicago and Indianapolis Airports. *Be sure to give your flight destination as Bloomington, Indiana, since Britt also serves Bloomington, Illinois.*

Indianapolis International Airport is approximately 50 miles from Bloomington, and bus transportation between the airport and Bloomington is not convenient. There are, however, several car rental services available as well as limousine service. If you wish to use the Bloomington Limousine Service, return the enclosed blue form directly to them (P.O. Box 5182, Bloomington IN 47402). From the Bloomington Airport contact Yellow Cab Co., Inc., telephone (812) 339-9744; the current rate is \$6.65.

For those planning to drive, several interstate highways lead to Indianapolis. From In-
(to page 5)

EXECUTIVE BOARD 1985-86

David Lewin, president, 1988 *
Harvard University

Wallace Berry, past president, 1987
University of British Columbia

Lewis Rowell, vice-president, 1988
Indiana University

Richmond Browne, secretary, 1988
School of Music
University of Michigan
Ann Arbor, MI 48109

Mary Wennerstrom, treasurer, 1988
School of Music
Indiana University
Bloomington, IN 47405

Dorothy Payne, 1986
University of Texas, Austin

John Rothgeb, 1986
SUNY, Binghamton

David Beach, 1987
Eastman School of Music

Janet Schmalfeldt, 1987
McGill University

Robert Gauldin, 1988
Eastman School of Music

Robert P. Morgan, 1988
University of Chicago

* term ends

John Clough
SUNY, Buffalo
Editor, *Music Theory Spectrum*

William Caplin
McGill University
Chair, Publications Committee

Vernon Kliwer
Indiana University
Chair, 1986 Program Committee

THE SMT NEWSLETTER is published in March and August by the Society for Music Theory. Deadlines are February 1 and June 15. Material for future issues should be sent to:

James Baker, Editor
SMT Newsletter
Dept. of Music, Box 1924
Brown University
Providence, RI 02912

10th Annual Meeting in Rochester

The society's tenth annual meeting will be held in Rochester, New York, November 5-8, 1987. The Program Committee is chaired by Robert Morris (Eastman School of Music) and includes: William Caplin (McGill University), Vernon Kliwer (Indiana University), 1986 Chair; David Lewin (Harvard University), *ex officio*; Hedi Siegel (Hunter College, CUNY); Deborah Stein (Eastman School of Music) and members yet to be named. David Beach (Eastman School of Music) is in charge of arrangements.

The committee will recognize the tenth anniversary of the Society's founding in a number of ways still to be determined. Also, in view of Eastman's historic eclecticism, the committee hopes to attract proposals focusing on performance and analysis as well as pedagogy of theory, 20th-century music, and other topics to be announced.

A formal call for papers will be mailed to the membership shortly. The deadline will be February 15, 1987, and ideas and proposals should go to:

Robert Morris, Program Committee Chair
Eastman School of Music
26 Gibbs Street, Rochester NY 14604.

Spectrum Deadline

Music Theory Spectrum welcomes submissions at any time of the year and will make every effort to render publication decisions within a reasonable length of time. The deadline for submissions for Volume 9 (scheduled for publication in summer 1987) is **December 1, 1986**. Papers and editorial correspondence should be sent to John Clough, Editor, *Music Theory Spectrum*, Department of Music, SUNY at Buffalo, Buffalo NY 14260.

McGill Theory Symposium

On March 14-15, the Faculty of Music of McGill University hosted the *McGill Theory Symposium: A Perspective on Music Theory in Canada Today*, which, for the first time, brought together leading music theorists from across Canada to exchange research and foster a network of professional contact. The following papers were presented: Wallace Berry, "The Relations of Analysis to Performance: A Syllabus of Issues"; William E. Caplin, "Structural Expansion in Beethoven's Symphonic Forms"; Anne C. Hall, "Metric Accent"; Robert Jones, "Musical Continuity in Tippett's *King Priam*"; Edward Laufer, "A Linear Approach to Twentieth-Century Compositions"; Christopher Lewis, "*Tonalite engloutie: Syrinx* revisited"; Jean Jacques Nattiez, "How Do We Deal With the Proliferation of Models of Musical Analysis?"; Janet Schmalfeldt, "Alban Berg's Path to Atonality: the Piano Sonata, Op. 1" During the concluding round table discussion, led by Bo Alphonse, possible ways of sustaining the momentum of interchange generated by the Symposium were discussed: these included holding similar conferences at other Canadian Universities, organizing a special meeting of Canadian scholars at the SMT annual convention, and establishing a Canadian chapter of the SMT.

William E. Caplin
McGill University

From the Editor

This will be the last issue of the SMT Newsletter under my editorship; hence this wordy message.

It is impossible to thank all those who have contributed advice, information and encouragement during the past six years but I must try. I would like to thank Allen Forte, Wallace Berry, David Lewin, Mary Wennerstrom, Richmond Browne, David Beach, William Caplin, all of whom have been especially generous with their time, have shared their wisdom, have tolerated my calls at odd hours, and have suffered with me (and sometimes for me) when I have erred.

I cannot name each officer and member who has provided information and suggestions, but I am deeply grateful to them. Thanks, also, for those flyers of anonymous origin that have appeared in my mail announcing this conference or that journal. I hope you will continue to direct your communications to the new editor.

Nor can I name all those who have contributed their labor (as conscripts!), stuffing envelopes, sorting the bulk mailing and the like. Suffice it to say that there were students, colleagues and house guests—so that nowadays people are skeptical of my mid-day dinner invitations in early March or August. I must thank Ros'y, who has served as proofreader, stuffer, sealer, errand and message-person for seven issues and whose experience sorting bulk mailings has been invaluable.

I would be remiss if I did not mention the firm who has produced the Newsletter for the last six issues, Harty's Printing of Dallas, and Wanda Sullivan, who has handled the account. Their devotion to serving our needs is perhaps best conveyed by an anecdote involving the Spring 1985 issue: We had produced a six-page newsletter, which I suggested be trifoldd to fit a letter-size envelope after bifolding to 8½ by 11. Though no one resisted overtly, I was asked repeatedly whether I really wanted the tri-folding and of course I replied that I did. (Always sensitive to costs, I knew we would save a few dollars by using No. 10 envelopes.) On delivery day I arrived to find most of the staff—sales, production, maintenance, owners and perhaps a customer who happened in at the wrong time—gathered around a large conference table frantically folding Newsletters. I never again suggested tri-folding.

It has been a privilege to watch the Society's growth and maturation from this vantage point. It has also been edifying, and great fun. I shall miss the excitement if not the omnipresent dread of catastrophe.

Lately, my sense of having "peaked" as Newsletter editor has increased, of knowing that if it is to continue to improve it needs fresh talent; and so I asked President Lewin to excuse me from this post, a request he has graciously honored. Besides, I believe that such periodic changes are healthy for all concerned. I was delighted to learn of James Baker's appointment as my successor for an initial three-year term, beginning with Volume 10, No. 1, for it surely affirms my judgement. Those who know him will agree that his writing is as elegant as his person, and that he will bring his leadership ability and ingenuity to bear on this project as he does in all things.

Richard S. Parks

(Bloomington, from page 1)

dianapolis, take State Highway 37 south to Bloomington. The approach from the south is best through Louisville; take Interstate 65 north to Columbus, Indiana, then proceed west on State Highway 46 to Bloomington. Indiana University is located five blocks east of the center of town. See the enclosed map of major highways and building locations.

Parking is available in two lots at the Indiana Memorial Union, and registered guests may park at no charge by presenting the regular dispenser ticket to the cashier at the front desk of the hotel in exchange for a guest parking pass. Registered guests at the Poplars may park there at no charge. For those with cars not staying in either hotel, campus parking permits may be obtained for \$1 per day from the front desk at the Unions Building. The two Union lots also permit hourly parking at \$.50 per hour (maximum \$4.00 per day).

ACCOMMODATIONS AND MEALS All of the guest rooms at the Indiana Memorial Union have been reserved for the SMT conference for the nights of November 6-8. To make your reservation, please return the enclosed yellow card directly to the Union after indicating the type of housing desired and your check-in and check-out dates. Some rooms have also been reserved for Wednesday evening, November 5. *Please do not send cash.* Although the hotel cards indicate otherwise, your reservation will automatically hold your room for a post-6:00 p.m. arrival. You should receive a written confirmation from the Union. Note that these rooms will be held for the conference only until *Monday, October 20*, after which they will be released for sale to the general public.

A restaurant, coffee shop, and a cafeteria in the Indiana Memorial Union offer a range of food service at moderate rates for your convenience. Only nonalcoholic beverages are served in the public areas of the Union; however most guest rooms are equipped with small refrigerators. A number of good restaurants, several of which serve alcoholic beverages, are located within walking distance. Lists of Bloomington restaurants will be available at the conference.

Rooms have also been reserved at the Poplars, a conference center two blocks from the Union. Breakfast is available there, and several restaurants are located within a two-block area. If you wish to make reservations at the Poplars, please return the enclosed green sheet directly to them. Note that a deposit of one night's room rate is required to hold your reservation. Other Bloomington motels are listed below with prices. Contact them directly for reservations if desired; no rooms have been reserved specifically for the conference. The locations of the Union, the Poplars, and the motels listed below are all identified on the enclosed map. Those wishing the most reasonable rates should consider sharing rooms with three or four persons in the Union or the Poplars, or, for those with cars, staying at the Motel 6.

OTHER BLOOMINGTON MOTELS

| | | |
|--------------------------------|--------|--------|
| Fireside Inn (Best Western) | Single | Double |
| 4501 E. 3rd St. (812) 332-2141 | \$38 | \$45 |
| Howard Johnson's | | |
| 1722 N. Walnut (812) 332-7241 | 33 | 37 |

| | | |
|--|----|----|
| Holiday Inn | | |
| 2601 N. Walnut (812) 332-9453 | 37 | 43 |
| Indiana Motor Lodge | | |
| 200 Matlock Rd. (812) 336-0905 (Rt. 46 bypass and College) | 33 | 37 |
| Motel 6 | | |
| 126 S. Franklin Rd. (812) 336-0689 (Rt. 37 bypass and West 3rd) | 19 | 23 |
| Ramada Inn | | |
| 1710 Kinser Pike (812) 334-3252 | 44 | 49 |
| Stony Crest Motel | | |
| 1300 N. Walnut (812) 332-9491 | 25 | 32 |
| Travelodge | | |
| 2615 E. 3rd (812) 339-6191 | 32 | 38 |

EXHIBITS AND INFORMATION Any journal, publisher, or group that wishes to include any information in the registration folders or that wishes to exhibit material including brochures, books, equipment, etc. should write to SMT Exhibits, David Neumeyer, School of Music, Indiana University, Bloomington IN 47405 for information on procedures and fees for exhibits. All material to be placed in the folders must arrive in Bloomington by Friday, October 31.

Exhibit space will be available beginning at 9:00 AM on Thursday, November 6. Space must be reserved by October 31.

GENERAL Bloomington remains on Eastern Standard Time year round. The average temperatures in early November range from a low of around 40 degrees to a high of around 60. However, temperatures at that time have been known to range from 32 to 75! Be prepared for rainy weather; snow is unlikely.

We hope that you will be able to attend the 1986 convention in Bloomington. The dates were set and announced several years ago and were chosen because of the availability of the Union facilities. We are sorry that the American Musicological Society has chosen the same weekend for its convention; we look forward, however, to an exciting SMT program of papers, special sessions, social activities, concerts and opera and we hope that you will be with us.

Mary H. Wennerstrom, for the
1986 Local Arrangements Committee

Annual Business Meeting

The SMT Annual Business Meeting will be held in the Whittenberger Auditorium of the Indiana Union on Saturday, November 8 at 5:00 p.m.

Making a Place for Women II

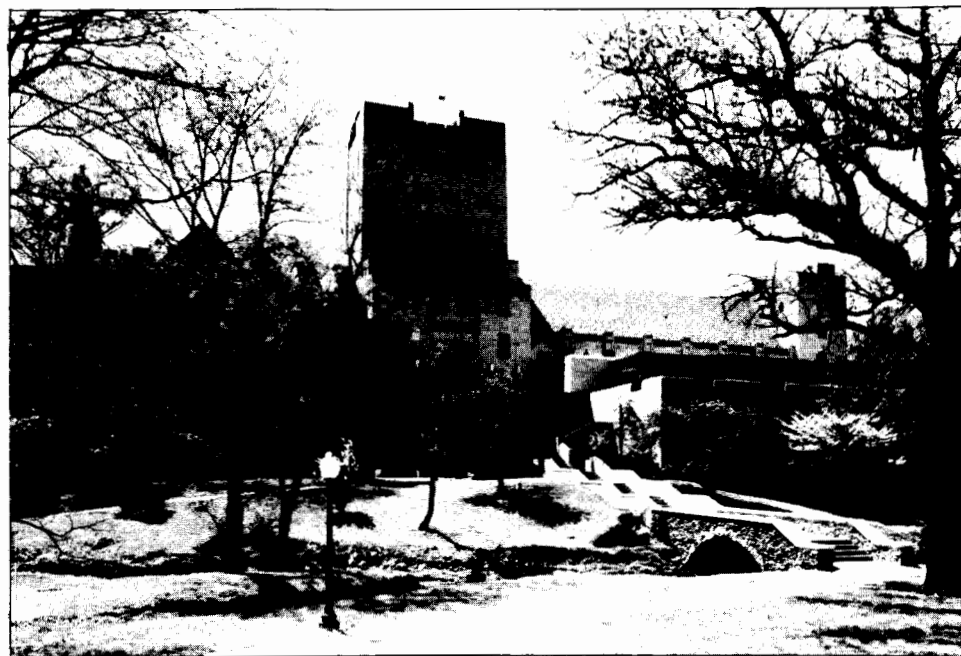
An informal meeting for men and women to discuss the status and role of women within the profession and the Society will be held on Thursday evening, November 6, 1986 from 7:30 p.m. to 10:00 p.m. during the SMT meeting in Bloomington. Anne C. Hall will speak on the topic "Traps for Women Into Which I Have Fallen." We will discuss the future role and function of such a group and the possibility of official status for a "Committee on Women's Concerns" within SMT, and there will be a forum for any other pertinent issues. For further information contact: Judy Lochhead, Dept. of Music, SUNY at Stony Brook, Stony Brook, NY 11794.

Newsletter Address Change

Materials for future issues of the SMT Newsletter should go to James Baker, SMT Newsletter Editor, Dept. of Music, Box 1924, Brown University, Providence, RI 02912. The deadlines remain the same: February 1 for the spring issue, and June 15 for the fall issue.

Future Meetings

The tenth annual SMT meeting will be held in Rochester, New York, November 5-8, 1987, with the Eastman School of Music as host, and will be a solo conference. The 1988 meeting is set for Baltimore, and 1989 for Austin, both with AMS. Plans are being explored for a joint meeting with AMS and SEM in the San Francisco area in 1990.



Indiana Memorial Union Building at IU

(Vancouver, from page 4)

Bloomington this fall and in Rochester for our tenth anniversary in 1987, to concentrate on matters of theory only.

For Vancouver was a celebration of the world-wide activity of music-making and the contemplation of music. Our Society contributes significantly to that picture and demonstrated its best work in the illustrious agora that was Vancouver.

It was funny, though, to be speaking with all the eloquence one can summon—to an audience whose collective gaze is right past your shoulder...out the window... hypnotized by the snow on the mountains.

Richmond Browne SMT Secretary
The University of Michigan

Regional Meetings

The Texas Society for Music Theory will hold its Ninth Annual Meeting at Stephen F. Austin State University in Nacogdoches, Texas in the spring of 1987 (dates to be announced). The deadline for submitting complete papers or any theory topic is December 20, 1986. For more information contact Thomas Clark, TSMT President, School of Music, North Texas State University, Denton, TX 76203.

The Midwest Theory Society will meet with the Great Plains Chapter of the College Music Society, April 25-26, 1987, at Kansas State University, Manhattan, Kansas. The deadline for submitting papers is November 3, 1986. Send proposals to Charles Smith, Dept. of Music, Southeast Missouri State University, Cape Girardeau, Missouri 63701.

The Central Gulf Theory Society held its third annual conference March 14-15 at the University of Arkansas in Little Rock. Theorists from six states participated in the event hosted by UALR Theory Coordinator Robert Boury. Next year's conference is scheduled for spring 1987 at Samford University. Inquiries should go to Dr. James Jensen, Dept. of Music, Samford University, 800 Lakeshore Drive, Birmingham, AL 35229.

The Florida State University Music Theory Society held its fourth annual forum on March 8, 1986. Papers were presented by William Davis (University of Georgia), Danny Mathers (Florida State University), James Perone (SUNY at Buffalo) and Marshall M. Thomason (University of Texas). Guest speaker Charles

Burkhart (Queens College) chose as his topic, "Schenkerian Rhythmic Analysis: A Demonstration," and Roy Johnson chaired a panel discussion, "How Much Is Too Much Analysis?"

The Fourth Biennial Symposium on Research in Music Theory, sponsored by the Graduate Theory Association of the School of Music, Indiana University, was held in Bloomington on March 7-8, 1986. Paper topics included Schenkerian analysis, its application to jazz and popular music, analysis of early music, Byzantine music theory, and various analytic approaches to 19th and 20th-century music. William Poland (Ohio State University) delivered the keynote address. The symposium coincided with the Bloomington premier of John Eaton's opera, *The Tempest*.

The Music Theory Society of New York State will hold its 1986 annual meeting October 10-11 at SUNY Binghamton. Papers on a wide range of topics are planned, including a special session on phenomenological approaches to the analysis of music chaired by Judy Lochhead. For more information contact Prof. Lochhead at the Dept. of Music, SUNY at Stony Brook, Stony Brook NY 11794-5475.

Grants and Fellowships

John Simon Guggenheim Memorial Foundation.

The Guggenheim Foundation offers Fellowships to further the development of scholars and artists by assisting them to engage in any field of knowledge and creation in any of the arts, under the freest possible conditions and irrespective of race, color and creed.

Fellowships are awarded through two annual competitions; one open to citizens and permanent residents of the United States and Canada, the other open to citizens and permanent residents of all the other American states, of the Caribbean, of the Philippines, and of the French, Dutch, and British possessions in the Western Hemisphere. Fellowships will be awarded by the Trustees upon nominations made by a Committee of Selection. Fellowships in music are awarded only to composers of music or to scholars who propose research into the history or theory of music.

Appointments are ordinarily made for one year, but in no instance for less than six consecutive months. The amount of each grant will be adjusted to the needs of the Fellows, considering their other resources and the purpose and scope of their studies. Members of the teaching profession receiving sabbatical leave on full or part salary are eligible for appointment, as are holders of appointments under the Fulbright program, but Guggenheim Fellowships may not be held concurrently with other fellowships.

Applications must be made in writing on or before October 1, 1986, by the candidates themselves in the form prescribed, addressed to the John Simon Guggenheim Memorial Foundation, 90 Park Avenue, New York NY 10016. Final selection of Fellows for 1987-88 will be made in late March 1987. Application forms will be mailed on request.

Mellon Fellowships in the Humanities

The Andrew W. Mellon Foundation offers

fellowships for any college senior or recent graduate who is a U.S. or Canadian citizen, can present evidence of outstanding academic promise and wishes to *begin* graduate work in preparation for a career of teaching and scholarship in a humanistic field of study. Those who have been candidates in a previous year, however, are normally *not* eligible. Candidacy must be initiated by a nomination from a faculty member addressed to the program's appropriate Regional Chairman, or to the National Office if the nominee is overseas or expects to be there early 1986.

Nominations must reach Regional Chairmen by November 3, 1986. Applications must reach Regional Chairmen by December 8, 1986.

The stipend for Mellon Fellows entering graduate school in the fall of 1987 will be \$9,000 plus payment of tuition and standard fees to their graduate schools. Fellowships will be renewed for a second year on recommendation of the graduate school concerned. In that year, the graduate school is expected to cover one-third of tuition and fees; the Mellon Fellowships will cover the remainder. In addition, Fellows who have performed with distinction and are ready to complete their Ph.D. dissertations not later than the fifth year of graduate study will be eligible for stipends in the final year of dissertation work; tuition and fees will be the responsibility of the Fellow and his or her institution in this final year.

Fields eligible are the traditional humanities disciplines, including music theory and history, but not the creative and performing arts.

For information contact; Dr. Robert F. Goheen, Director, Mellon Fellowships in the Humanities, Woodrow Wilson National Fellowship Foundation, P.O. Box 288, Princeton, NJ 08542.

American Council of Learned Societies

The ACLS administers several programs for which SMT members may be eligible. All require the Ph.D. or equivalent. Most are available to U.S. and Canadian citizens and

some to non-U.S. citizens who are permanent residents.

The Fellowship Program provides up to \$15,000 for 6-12 months to support and allow free time for research in the humanities and in the social sciences. Applicants must have the Ph.D. or equivalent awarded before January 1984. The application deadline is September 30, 1986.

Grants for Research in Chinese Civilization and Mellon Fellowships for Chinese Studies provides up to \$25,000 to facilitate postdoctoral research and further specialization in the area of Chinese civilization. The application deadline is December 1.

Grants-in-Aid provides up to \$3,000 to support humanistic research. The application deadline is December 15.

Research Fellowships for Recent Recipients of the Ph.D. provides up to \$10,000 to support humanities scholars whose Ph.D. degrees were awarded since January 1, 1984. The application deadline is September 30.

Research Grants for East European Studies provides up to \$25,000 to support humanistic studies relating to East European countries and particularly invites comparative research on social institutions and processes. The application deadline is December 1.

Travel Grants for Humanists enables scholars to participate in international meetings held outside North America. Grants cover partial airfare. Application deadlines are November 1 for meetings scheduled March through June, March 1 for meetings July-October and July 1 for meetings scheduled November through February.

For complete information members should request the brochure: *Aids to Individual Scholars*. The address is ACLS, 228 East 45th Street, New York NY 10017-3398.

Saturday, 8 November 1986

9:00–12:00 SMT Papers

History of Theory—18th Century Music

(Georgian Room)

David Beach (Eastman School of Music), Chair

Jonathan W. Bernard (Yale University): "The Marpurg-Sorge Controversy"

Thomas Christensen (New Haven, Connecticut): "L'Art de la basse fondamentale: An Unknown Treatise by Rameau"

Leta E. Miller (University of California, Santa Cruz): "Music Theory as Science: Evidence from the Royal Society of London, 1660-1750"

Berg/Webern (Whittenberger Auditorium)

Dave Headlam (The Eastman School of Music): "Row Structure in *Der Wein* in Relation to *Lulu*"

C. F. Hasty (New Haven, Connecticut): "Material and Form in Webern's Twelve-Tone Music"

R. Lance Olsen (Stockton State College): "M.S. F 21 Berg 53: The Connection between Berg's *Seraphite* Symphony (1913) and the Three Orchestral Pieces, op. 6"

1:00– 2:30 Plenary Session (Whittenberger Auditorium)

Greetings, Charles H. Webb, Dean, School of Music, Indiana University

Presentation of Publications Awards, Lewis Rowell (Indiana University)

Keynote Address, Joseph Kerman (University of California, Berkeley)

2:45– 4:30 SMT Papers

American Serialists (Whittenberger Auditorium)

Chair to be announced

Andrew Mead (University of Michigan): "About *About Time*'s Time: Milton Babbitt's Recent Rhythmic Practice"

T. B. Carrabr  (Graduate Center, The City University of New York): "Two Etudes in the Evolution of Twelve-tone Tonality"

16th Century Topics (Georgian Room)

W. T. Atcherson (University of Iowa), Chair

Philip Russom (Indiana University): "The Theory of Double Counterpoint in the Sixteenth Century"

Mary C. Tilton (Bloomington, Indiana): "The Influence of Psalm Tone and Mode on the Structure of the Phrygian Toccatas of Claudio Merulo"

Jazz (Music Addition 007)

J. Kent Williams, University of North Carolina), Chair

Milton L. Stewart (Seattle, Washington): "Structural Development on *Confirmation* by the Charles Parker Quartet"

Steve Larson (University of Michigan): "Integration in a Jazz Performance: Concealed Repetition in Oscar Peterson's Performance of Thelonious Monk's *Round Midnight*"

5:00– 6:00 Business Meeting (Whittenberger Auditorium)

8:00 Opera, Mozart's *Marriage of Figaro*, Musical Arts Center

Sunday, 9 November 1986

8:00– 9:00 SMT Joint Meeting of 1986 and 1987 Program Committees (Distinguished Alumni Room)

9:00–12:00 SMT Papers

20th Century Theories (Georgian Room)

Steven E. Gilbert (California State University, Fresno), Chair

Joseph N. Straus (Queens College, City University of New York): "The Problem of Prologation in Post-Tonal Music"

John L. Snyder (Northfield, Minnesota): "Entropy as a Measure of Musical Style: "The Influence of *a priori* Assumptions"

Gregory Proctor (The Ohio State University) and Herbert Lee Riggins (The University of Alabama, Birmingham): "Levels and the Reordering of Chapters in Schenker's Free Composition"

Rhythm (Whittenberger Auditorium)

Fred Lerdahl (The University of Michigan), Chair
Peter C. van den Toorn (University of California, Berkeley): "Stravinsky Re-barred"

Paul Wilson (University of Miami): "Form and the Quality of Time in Bart k's Piano Sonata"

Stephen Parkany (Amherst College): "Putting Two and Two Together: Metrical Periodicity in *Siegfried*, Act III, Scene 1"

SMT in Vancouver 1985

The sheer beauty of Vancouver cannot be forgotten.

Long after (or instantly before) the great four-power summit conference began and ended, the brilliant speakers, fascinating dinners, job-hunting and networking became secondary thoughts; the snow on the mountains was everything.

The cover of the abstract booklet reads AMS/CMS/SEM/SMT. The booklet is 148 pages long. The list of authors, panelists, and respondents takes up three pages in itself and contains 249 names. At least 1500 people milled through the meeting rooms of three hotels, attending one of perhaps six or eight presen-

tations at any given time.

That sounds like chaos, but it wasn't. It was fun. It was hearing the four presidents debate with verve the central questions of musical scholarship. It was noting that SMT members appeared conspicuously on the programs of the *other* three societies. In terms of the richness of personality, the incredible array of people one could hear and meet in one weekend, it must have been the finest single conference I have attended in nearly twenty years.

For SMT members, special thanks go to Wallace Berry and William E. Benjamin, hosts not only of our meeting but of the whole shebang. At a reception given by the University of British Columbia, one could appreciate

their planning by watching old friends, young and promising scholars, and internationally reknowned people you have only heard of before—all walking casually into the scene to mingle and greet one another with genuine pleasure.

Despite the agonies of a large meeting—forced to choose from among so many superb offerings knowing that you cannot get to everything—the net effect was exhilarating. In SMT meetings alone, one heard the witty Arnold Whittall at our keynote session and watched, later, as David Lewin deftly assumed leadership of the Society. But there will be time enough, when we meet in solo fashion in

(to page 6)

PROGRAM
for the
Ninth Annual Meeting
of the
SOCIETY FOR MUSIC THEORY

6 - 9 November 1986
Bloomington, Indiana

Thursday, 6 November 1986

9:00-12:00 Publications Committee (Distinguished Alumni Room)

9:00-12:00 SMT Publications Award Committee (To be announced)

11:00- 5:00 Registration (East Lounge)

12:00- 2:00 Executive Board Meeting (Federal Room)

2:00- 5:00 SMT papers

Form (Georgian Room)

Leo Kraft (Queens College, The City University of New York), Chair

Roger Graybill (University of Texas at Austin): "Circularity in Brahms's F major Cello Sonata"

David Neumeier (Indiana University): "Proportional Intrigue: On Tonal-Formal Schemes in Hindemith's Music"

Charles D. Morrison (University of British Columbia): "Interactions of Conventional and Non-conventional Tonal Determinants in the Final Movement of Bartók's String Quartet No. 6"

Schoenberg (Whittenberger Auditorium)

Chair to be Announced

Fusako Hamao (Yale University): "The Historical Origin of Schoenberg's Combinatorial Hexachord"

Howard Cinnamon (Hofstra University): "Tonal Elements and Unfolding Non-Triadic Sonorities in the Second of Schoenberg's *Drei Klavierstücke*," Op. 11"

Harry Ballan (Pennsylvania State University): "An Approach to Schoenberg's Expansion of Tonality"

7:30-10:00 Special Session (Georgian Room)

Making a Place for Women II

Judy Lochhead (State University of New York at Stony Brook), Chair

8:30-11:00 Special Session (To be announced)

Computer Applications: Two Approaches to Set-Theory-Pedagogy and Analysis

Gary Wittlich (Indiana University), Chair

Alexander Brinkman (Eastman School of Music) and Craig Harris: "An Integrated-Software System for Set-Theoretic and Serial Analysis"

J. Kent Williams (University of North Carolina): "Logo as a Medium for Exploring Atonal Theory"

Friday, 7 November 1986

8:00- 5:00 Registration (East Lounge)

12:00- 2:00 Executive Board (Coronation Room)

9:00-12:00 SMT Papers

18th Century Topics (Georgian Room)

Charles Smith (The University of Connecticut), Chair

Graham H. Phipps (North Texas State University): "Eighteenth-Century Views on the Augmented-Sixth Chord: Documentation of a Shift from Contrapuntal to Harmonic Theory"

David Stern (Graduate Center, The City University of New York): "Hidden Uses of Chorale Melodies in Bach's Cantatas"

Pamela L. Poulin (State University College at Cortland): "F.E. Niedt's *Musicalische Handleitung*, Part I (1700/1710) and J. S. Bach's 'Vorschriften und Grundsätze . . .': A Comparison"

Berio/Ligeti (Whittenberger Auditorium)

Jonathan Kramer (University of Cincinnati), Chair

Cynthia Folio (Texas Christian University): "Sets and Polyphony in Berio's *Sequenza* for Solo Flute: Implications for the Performer"

Janice Macaulay (Wells College): "Aspects of Pitch Structure in György Ligeti's *Melodien für Orchester*"

Zohar Eitan (University of Pennsylvania): "Functionality Within Cluster Harmony: Primary Notes and Cadences in the First Movement of Ligeti's *Double Concerto*"

2:00- 5:00 SMT Papers

Classical Form (Georgian Room)

Robert Hatten (The University of Michigan), Chair

Ethan Haimo (University of Notre Dame): "Haydn's Altered Reprise"

William E. Caplin (McGill University): "Structural Expansion in Beethoven's Symphonic Forms"

David H. Smyth (Austin, Texas): "Large-Scale Rhythm and Formal Closure in Classical Instrumental Music"

20th Century Topics (Whittenberger Auditorium)

Patricia Carpenter (Barnard College, Columbia University), Chair

Richard Cohn (The University of Chicago): "Transpositional Combination in Bartók"

Lynne Rogers (Princeton University): "Stratification in the Works of Stravinsky: An Alternative Approach to Counterpoint"

J. Philip Lambert (Eastman School of Music): "Ives's Experiment in Quarter-Tone Harmony"

5:30- 7:00 Cocktail Reception hosted by Dean Charles H. Webb and the Indiana University School of Music (University Club)

8:30 Contemporary Concert (Recital Hall)