

SMT newsletter

VOLUME ELEVEN
NUMBER TWO
AUGUST 1988

A PUBLICATION OF THE SOCIETY FOR MUSIC THEORY

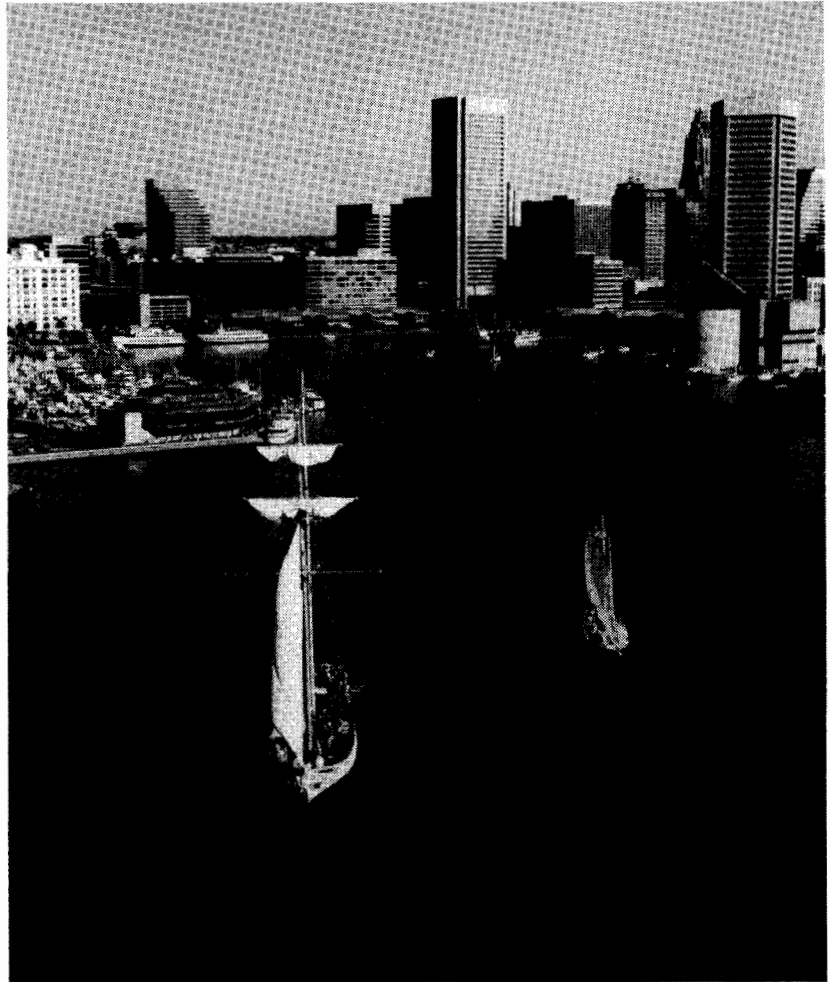
The 1988 Conference: Baltimore

Baltimore, built around a beautiful harbor on the Chesapeake Bay, will be the site of the Eleventh Annual Meeting of the Society for Music Theory, held jointly with the American Musicological Society. The University of Maryland, College Park, and the University of Maryland, Baltimore County, in conjunction with the Peabody Conservatory of Johns Hopkins University and Towson State University will serve as host institutions.

The meeting will take place at the Omni International Hotel, located in the heart of downtown Baltimore, and only a short walk via skywalk to the restored Inner Harbor, which contains a multitude of shops and restaurants virtually on the water's edge, as well as the 18th-century frigate, *Constellation*, the flagship of the United States Navy, and the world-famous Aquarium.

The SMT Program and Local Arrangements Committees have been working closely with their counterparts in AMS. The Program Committees have agreed on a number of joint sessions that stress the community of interest between our two societies.

In addition to papers that run from Ethiopian Chant to Harry Partch, there will be several special presentations. On Saturday November 5 Leonard Meyer will deliver the SMT Keynote Address. At noon on Friday November 4, a special panel including Malcolm Frager, pianist, and David Zinman, Music Director of the Baltimore Symphony Orchestra, will discuss Beethoven's tempi. On Friday night the Baltimore Symphony with Malcolm Frager will perform an all-Beethoven concert at the new Meyerhoff Hall, followed by a special reception for AMS/SMT members. Also of note is the session on C. P. E. Bach in this the 200th anniversary year of his death. This will be complemented by a noon-hour concert of C. P. E. Bach's music by Eiji Hashimoto and Evelyn Garvey. Other noon-hour concerts will feature a recital of Ligeti's Etudes for Piano by Lois Svard, an English Ladymass performed by Anonymous 4, the music of Heinrich Schenker performed by an ensemble from the Hartt School of Music (Patrick Miller, Director), and a lecture-recital on Schubert's models in songwriting by Will Crutchfield with Debra Vanderlinde.



Baltimore Inner Harbor

On Thursday and Saturday evenings, the Peabody Conservatory will present a staged production of Giovanni Battista Bononcini's *Camilla* using the original English libretto of the London 1706 production. On Friday, the Maryland Handel Festival will present Handel's *Samson* in Westminster Hall—a Federal-period church—with Lorraine Hunt, Sylvan Müller, and Gillian Fisher as soloists, and on Saturday the Pomerium Musices and the Baltimore Consort will present a program of 16th- and 17th-century Italian vocal and instrumental music at the Walters Art Gallery. Seating for these concerts is quite limited.

Thursday evening will see a no-host cocktail party, and for the connoisseurs of *arachnidae* a Maryland crab feast will follow in Lexington Market, a still-functioning 18th-century indoor market. On Saturday evening the (now traditional) AMS dance will take place. The orchestra will be the Capital Quicksteps & Quadrille Orchestra, which features contra dancing—yes, there'll be a caller—as well as couple dancing, including Viennese waltzes and fox-trots, to turn-of-the-century (20th, that is) arrangements unearthed from the Library of Congress.

Baltimore's Walters Gallery with its superb collection of medieval and renaissance paintings and incunabula will

Executive Board 1987-88

David Lewin, *president*, 1988*
Harvard University

Gary E. Wittlich, *president-elect*, 1988
Indiana University

Lewis Rowell, *vice-president*, 1988
Indiana University

Richmond Browne, *secretary*, 1989
School of Music
University of Michigan
Ann Arbor, MI 48109

Mary Wennerstrom, *treasurer*, 1990
School of Music
Indiana University
Bloomington, IN 47405

Robert Gauldin, 1988
Eastman School of Music

Robert P. Morgan, 1988
University of Chicago

Patrick McCreless, 1989
University of Texas/Austin

Richard S. Parks, 1989
University of Western Ontario

Martha M. Hyde, 1990
Columbia University

Bryan R. Simms, 1990
University of Southern California

*term ends

John Clough
SUNY, Buffalo
Editor, *Music Theory Spectrum*, Vol. 10

Jonathan Bernard
University of Washington
Editor, *Music Theory Spectrum*,
Vols. 11-13
Chair, 1988 Program Committee

James M. Baker
Brown University
Editor, *SMT Newsletter*

William Caplin
McGill University
Chair, Publications Committee

The *SMT Newsletter* is published in February and August by the Society for Music Theory. Respective deadlines are January 15 and June 15. Material for future issues should be sent to:

James M. Baker, Editor
SMT Newsletter
Department of Music, Box 1924
Brown University
Providence, RI 02912

mount a special exhibition, "Making Music in Medieval Manuscripts," and hold a wine-and-cheese reception from 6 to 9 on Thursday evening. The Baltimore Museum of Art also extends a cordial invitation to our members to view its world-famous Cone Collection, which includes works of artists of Gertrude Stein's studio, Matisse, Picasso, and others.

For those desiring more extensive outings, special bus tours are planned for Friday and Saturday afternoons. These will include museums, special architectural sights of Baltimore, including Fort McHenry, which still flies a replica of the flag that Francis Scott Key saw, and the Inner Harbor.

The Omni Hotel will provide rooms for AMS/SMT members for \$80, single or double; extra beds are available for \$16. An Omni reservation card is enclosed. **Please return as soon as possible;** the Omni may not be able to accommodate late registrations. For students concerned about hotel costs, we have made a special arrangement with the Holiday Inn-Inner Harbor; rates for students only are \$56 single or double, with extra cots costing \$10 per night. Call directly (301) 685-3000 to make a reservation at the Holiday Inn.

Sovereign Travel Agency has worked out special rates with Piedmont and United Air Lines of 5% under discounted fares, or 40% under full-fare coach for those who cannot stay over Saturday night. Limousine service from Baltimore-Washington International Airport to the Omni is available. For those traveling in the Northeast Corridor, we have reserved a special Amtrak coach from AMS/SMT members on the Bankers, which leaves New York City at 9:35 am Thursday November 3 and departs Baltimore Sunday November 6 at 2:16 pm. Round-trip fare is \$63 New York-Baltimore. Members may also board at Trenton and Philadelphia at comparable reduced rates. For travel arrangements Sovereign can be reached at (800) 338-8892, or if calling from Maryland (301) 625-2747.

In registering for the meetings, we urge members to be sure to indicate whether you belong to SMT, AMS, or both so that revenues and expenses can be allocated equitably.

We look forward to welcoming you to a pleasant stay in "Charm City"—Baltimore.

Ann McNamee
Howard Serwer
Michael Broyles
Chairs, 1988 Local Arrangements

From the President-elect

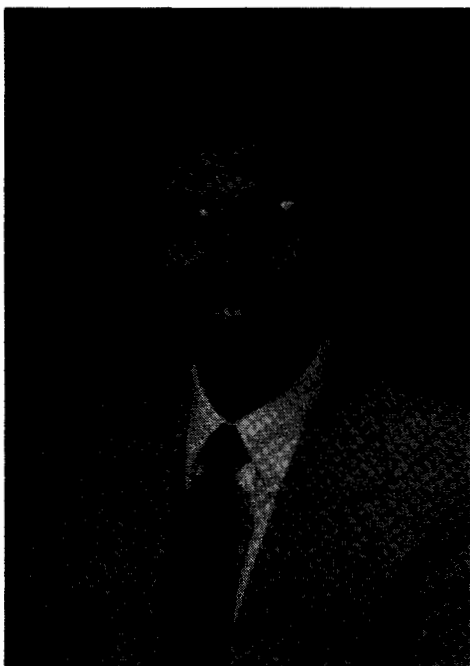
As President-elect of SMT, I look forward to my coming term of office with enthusiasm, as well as with some concern. I'm enthusiastic because our organization has demonstrated in the very few years of its existence that it is indeed a vital one comprised of a community of scholars with remarkable fecundity and variety. We have demonstrated through the agency of our Committee of Review that we are willing to look closely at ourselves and to accept, as well as respond to, constructive criticism. I know of no other professional society that has performed a similar self-review, and this seems to me to speak well for our society. Our publications and our conferences are further indications of our commitment to excellence and our collective interest in and pursuit of music theoretical substance. It appears to me that SMT—and by implication the discipline of music theory—is not only alive and well but is flourishing.

My concern in approaching the office is due to a number of factors. For one, I follow the presidencies of Allen Forte, Wallace Berry, and David Lewin, three men to whom I am personally indebted for their remarkable contributions to our discipline and for their leadership of SMT since its inception in 1978; these men are indeed hard acts to follow! Another factor is the very vitality from which my enthusiasm for SMT stems. During the review process, I heard complaints from a number of quarters that SMT meetings and publications were characterized "by Schenker and sets," that is, that we were too narrow in our focus and in particular that we were not interested in music theory pedagogy, the one activity common to all our members. Yet it appears to me that just the opposite is true, that the members of SMT demonstrate remarkable diversity and breadth of interest. Instead of centripetal tendencies fostered by narrowness (if indeed SMT was too narrow early on), it appears to me our tendencies now are centrifugal, and this complicates the tasks of communication, management, and organization. However, I am fortunate to be able to call on the excellent advice and counsel of our Treasurer, Mary Wennerstrom, and on our Secretary, Richmond Browne, along with the extremely capable Executive Board and standing committees, to assist in the tasks.

There are as well other issues we need to address, particularly as they affect the majority of our membership. Among these are the current changes in higher education being brought about by concern for increasing the number of general education courses in our undergraduate curricula; greater concern for quality teaching and for research on teaching; and particularly the need to encourage communication among the various professional societies in music. SMT has proved that it can flourish as a society, that it is independent and

SMT Business Meeting

The Annual Business Meeting of the Society for Music Theory will take place on Saturday November 5 from 5 to 6 pm at the Omni Hotel in Baltimore.



Gary Wittlich

self-sustaining. At the same time, we must guard against being an insular organization by fostering communication between SMT and other professional music societies with whom we share mutual concerns. Encouraging in this latter regard are the joint conferences already planned for 1988, 1989, and 1990.

The success of an organization is directly related to its ability to respond to the needs of its members and to the contribution of its members in areas of money, time, and ideas. As President-elect, I pledge my efforts as an agent of SMT to the needs of the organization, and I encourage all members to take an active part in the Society in order to assure its continued success.

Gary Wittlich
Indiana University

Music Cognition Special Session

The Music Cognition Group of the SMT will present its second special session, entitled "The Relevance of Research in Music Cognition to Music Theory," at the 1988 Conference in Baltimore on Thursday November 3 beginning at 7:30 pm. Jean-Jacques Nattiez (Université de Montréal) will deliver an opening address and moderate a series of short presentations by a variety of scholars. The session will conclude with questions and discussion. The focus of this special session will be (1) to provide an audience of nonspecialists with an informative survey of current music cognition research, and (2) to offer opinions on the relevance of this research to aspects of music theory. For further information, contact Session Chair Helen Brown, Division of Music, Purdue University, 37 Stanley Coulter Hall, West Lafayette, IN 47907; (317) 494-3707.

Regional Societies

The **Georgia Association of Music Theorists** announces its fall meeting, to be held October 21-22, 1988 at Agnes Scott College. Dorothy Payne will be the featured speaker. For further information, contact Theodore K. Matthews, Program Chair, GAMT, Department of Music, Agnes Scott College, Decatur, GA 30030.

The **Music Theory Society of New York State** will hold its 1988 annual meeting at Skidmore College in Saratoga Springs, NY, October 7-8, 1988. The agenda includes sessions on French music and music theory, an analysis symposium on Brahms's Op. 76/6, rhythm and meter, and perspectives on music scholarship. Papers will be delivered by James Marra, Michael Cherlin, Taylor Greer, Richard Parks, Penelope Peters, Philip Russom, Patricia Carpenter, Louise Trucks, Allen Cadwallader, George Fisher, Candace Wood, and Dave Headlam. Robert Gauldin will give the keynote address. For more information, contact: Mary Arlin, Secretary MTSNYS, School of Music, Ithaca College, Ithaca, NY 14850.

The **New England Conference of Music Theorists** will hold its fourth annual meeting on April 22-23, 1989 at Brandeis University in Waltham, Massachusetts. Proposals for papers, panels, or other types of sessions for this meeting may be sent to James Baker, President, NECMT, Box 1924, Brown University, Providence, RI 02912. (A formal Call for Papers will be issued early in the fall.) Proposals should be postmarked no later than December 15, 1988. NECMT welcomes applications for membership, especially from theorists in the New England region. Annual dues are \$10 (regular) and \$5 (student) and may be sent to Anne Trenkamp, NECMT Secretary, College of Music, University of Lowell, 1 University Avenue, Lowell, MA 01854.

Report of the Publications Committee

The Publications Committee had another busy year reviewing articles submitted to *Music Theory Spectrum* and advising the Executive Board on all matters pertaining to SMT Publications.

Our efforts were aided by Sarah Fuller, who was appointed to the Committee early last year; we are hopeful that her presence will stimulate a greater number of submissions in the theory and analysis of medieval and renaissance music. In other changes to the Committee's membership, Christopher Hasty has stepped down in order to devote his energies more fully to the editorship of the *Journal of Music Theory*. The Committee thanks Chris for his important service to the Society these many years and wishes him the very best at *JMT*. In his place, we welcome Andrew Mead as the newest member of our committee.

For the second consecutive year, submissions of articles to *Spectrum* have significantly increased. We are therefore confident that we will have a sufficient number of quality articles to support a semi-annual publication schedule. Toward that end, the Committee formally recommended to the Executive Board that

Spectrum be published twice a year, provided that the necessary financial means are available to maintain the present high standards of production.

William Caplin, Chair

Editor's Note—Because of space limitations, we were unable to include the above report in the March 1988 issue of the Newsletter. We regret any inconvenience the delay in publishing this report may have caused.

Contacts for Regional Societies

Central Gulf Theory Society

James A. Jensen
School of Music
Samford University
800 Lakeshore Drive
Birmingham, AL 35229

Central Midwest Theory Society

Charles W. Smith, Chairman
c/o Brandt Music Hall
Southeast Missouri State University
Cape Girardeau, MO 63701

Florida State University Music Theory Society

Jim Carter, President
c/o School of Music (MSS Box 90)
Florida State University
Tallahassee, FL 32306

Georgia Association of Music Theorists

Richard B. Nelson, President
c/o Department of Music
Mercer University
Macon, GA 31207

Indiana University Graduate Theory Association

School of Music
Indiana University
Bloomington, IN 47405

Music Theory Society of New York State

Mary Arlin, Secretary
c/o School of Music
Ithaca College
Ithaca, NY 14850

New England Conference of Music Theorists

James M. Baker, President
c/o Department of Music
Box 1924
Brown University
Providence, RI 02912

Texas Society for Music Theory

Stefan Kostka, President
c/o Department of Music
University of Texas
Austin, TX 78712

SEASECS Annual Award

The Southeastern American Society for Eighteenth Century Studies invites submissions for its annual competition. An award of \$250 will be given for the best article on an eighteenth-century subject published in a scholarly journal, annual, or collection between 1 September 1987 and 31 August 1988 by a member of SEASECS or a person living or working in the SEASECS area (Alabama, Florida, Georgia, Kentucky, Louisiana, Mississippi, North Carolina, South Carolina, Tennessee). The interdisciplinary appeal of the article will be considered but will not be the sole determinant of the award. Individuals may submit their own work or the work of others. To be considered, articles must be submitted in triplicate, postmarked no later than 10 November 1988, and sent to:

Dr. Barbara Brandon Schnorrenberg
3824 11th Avenue South
Birmingham, AL 35222

The 1987 award was presented to Mary D. Sheriff of the Department of Art, University of North Carolina at Chapel Hill, for "On Fragonard's Enthusiasm," *Eighteenth Century Theory and Interpretation* 28 (1987): 29-46. The 1988 award will be announced at the SEASECS annual meeting in Charleston, South Carolina in March 1989.

Grants and Fellowships

National Endowment for the Humanities

The National Endowment for the Humanities sponsors many programs that support the work of scholars. Most require the Ph.D. degree and many favor younger scholars. A complete list of programs may be obtained by writing to the Endowment; the list that follows includes programs most likely to interest music theorists. For information or applications direct inquiries to the appropriate programs through: The National Endowment for the Humanities, 1100 Pennsylvania Avenue, NW, Washington, DC 20506; (202) 786-0458.

Fellowships for University Teachers and Fellowships for College Teachers and Independent Scholars support full-time independent study and research. Applications are due June 1.

Project Research grants support collaborative or coordinated research projects for up to three years in all fields of the humanities. The application deadline is October 1.

Reference Materials grants aid projects that promise to facilitate research in the humanities by organizing essential resources for scholarship and by preparing finding aids and other reference materials. The application deadline is November 1.

Summer Seminars for College Teachers provide support for teachers to participate in eight-week summer seminars directed by distinguished scholars at institutions with libraries suitable for advanced study. This year the deadline was March 1.

Summer stipends provide support for college and university teachers and others to undertake two consecutive months of full-time independent study and research. Applications are due October 1.

Text programs support the preparation for publication of works that promise major contributions to the study of the humanities. Support is available in three categories: **Editions** grants fund the preparation of authoritative and annotated editions; **Translations** grants support English translations of works that will provide insight into the history, literature, philosophy and artistic achievements of other cultures; **Publication subvention** grants help to underwrite the publication and dissemination of distinguished scholarly works in all fields of the humanities where publication will entail a substantial deficit to the press. Application dates vary. Contact the Endowment for information.

Travel to Collections grants of \$750 enable individual scholars to travel to use the research collections of libraries, archives, or other repositories. Deadlines are July 15 for travel between June 1 and November 30, and January 15 for travel between December 1 and May 31. Contact the Endowment for information.

Younger scholars grants go to individuals for research and writing projects in the humanities for nine weeks during the summer under the supervision of a humanities scholar. The application deadline is November 1.

John Simon Guggenheim Memorial Foundation

The Guggenheim Foundation offers Fellowships to further the development of scholars and artists by assisting them to engage in any field of knowledge and creation in any of the arts, under the freest possible conditions and irrespective of race, color, and creed.

Fellowships are awarded through two annual competitions: one open to citizens and permanent residents of the United States and Canada, the other open to citizens and permanent residents of all the other American states, of the Caribbean, of the Philippines, and of the French, Dutch, and British possessions in the Western Hemisphere. Fellowships will be awarded by the Trustees upon nominations made by a Committee of Selection. Fellowships in music are awarded only to composers of music or to scholars who propose research into the history or theory of music.

Appointments are ordinarily made for one year, but in no instance for less than six consecutive months. The amounts of grants will be adjusted to the needs of the Fellows, considering their other resources and the purpose and scope of their studies. Members of the teaching profession receiving sabbatical leaves on full or part salary are eligible for appointment, as are holders of appointments under the Fulbright program, but Guggenheim Fellowships may not be held concurrently with other fellowships.

Applications must be made in writing on or before October 1 by the candidates themselves in the form prescribed, addressed to the John Simon Guggenheim Memorial Foundation, 90 Park Avenue, New York, NY 10016.

Council for International Exchange of Scholars

Fulbright Fellowships include more than 300 grants in research and 700 grants in university lecturing for periods ranging from three months to a full academic year. There are openings in over 100 countries and, in many regions, the opportunity for multi-country research is available. Scholars in all ranks are eligible to apply. Applications are seriously encouraged from retired faculty and independent scholars. The next major deadline is September 15, 1988 for research and lecturing applications for Africa, Asia, Western Europe, Eastern Europe, the USSR, and the Middle East, as well as lecturing awards in Mexico, Venezuela, and the Caribbean. Send inquiries to CIES, Eleven Dupont Circle, NW, Washington, DC 20036-1257; (202) 939-5403.

Advanced Research Fellowships in India are offered for both long-term (6-10 months) and short-term (2-3 months) study. Last year applications were due by June 15. Write to CIES, Attention: Indo-American Fellowship Program, Eleven Dupont Circle, NW, Suite 300, Washington, DC 20036-1257; (202) 939-5469.

American Council of Learned Societies

The ACLS administers several programs for which SMT members may be eligible. All require the Ph.D. or equivalent. Most are available to U. S. and Canadian citizens and some to non-U.S. citizens who are permanent residents.

The Fellowships Program provides up to \$15,000 for 6-12 months to support and allow free time for research in the humanities and social sciences. The application deadline is September 30.

Travel Grants support travel to meetings abroad, with a maximum award of \$1000. Deadlines are March 1 for July-October meetings, July 1 for November-February meetings, and November 1 for March-June meetings.

For complete information members should write to the ACLS, 228 East 45th Street, New York, NY 10017-3398; (212) 697-1505.

American Philosophical Society

These grants support basic postdoctoral research in all fields. A stipend of up to \$3500 is offered to subvene living expenses, travel, and supplies. Deadlines are February 1, April 1, June 1, October 1, and November 1 for decisions by the end of April, June, October, December, and February respectively. Contact the Committee on Research, American Philosophical Society, 104 South Fifth Street, Philadelphia, PA 19104.

Forthcoming Meetings

1989	October 26-29 Austin Joint Meeting with AMS Local Arrangements: Stefan Kostka Department of Music University of Texas Austin, TX 78712
1990	November 7-10 Oakland Joint Meeting with AMS & SEM Local Arrangements: Wayne Slawson Department of Music University of California Davis, CA 95616
1991	Cincinnati Local Arrangements: Arthur Komar
1993	Montreal Joint Meeting with AMS Present Contact: William Caplin